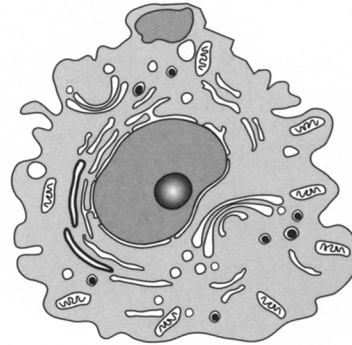
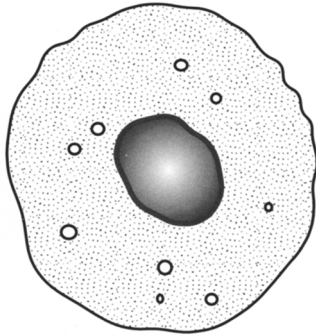


## MODULE: *Cells*

### Activity Sheet 1.2: What do we already know about cells?

Before starting your research it would be useful for you to discuss in your team what you already know about cells.



Create a mind map to summarise all you know about cells.

When doing this the following questions may help:

1. What are cells?
2. What structures (organelles) are found in cells?
3. What are the functions of these structures (organelles)?
4. What different cells do you know?

## Drawing a mind map

- a. Start in the middle of a blank page and write the idea or concept you intend to develop. In this case it will be Cells
- b. Develop related subtopics around the central topic and connect them to the centre with a line. (See example below.)
- c. Repeat this with any lower level subtopics and connect them to the original subtopic.
- d. Use different colours for emphasis and you can include drawings if it helps
- e. Keep the text short. Use one word or a very short phrase each time. This means you will have to think very carefully about the information you are trying to convey.
- f. Vary the text and thickness of the lines for emphasis. The more visual it is the more it will help you remember.

## Example

